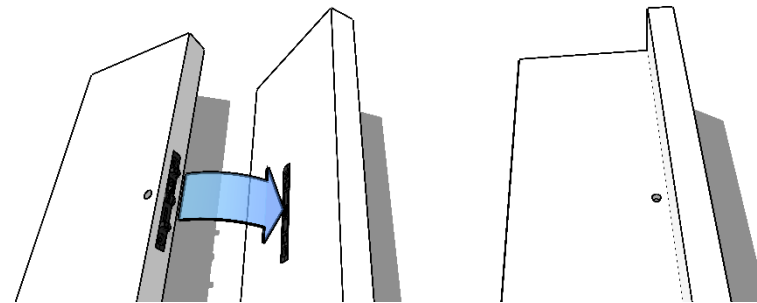




TO ASSEMBLE THIS,
YOU'LL NEED THE
FOLLOWING TOOLS:

4MM LONG ALLEN KEY
6MM ALLEN KEY
(THERE'LL BE ONE OF EACH IN
YOUR TOOL BOX)



Lamello

Unlike traditional cam fixings, the fixings we use are designed not to be seen when the unit is assembled. To fit them, simply align the pair of fixings, and use an allen key in the adjacent hole to join/twist the lever from one into the other.

1

First, fit the tray runners to the side panels. Note, the runners are closest to the front of the panel and ensure you put the left and right runners on the correct panels (the left panel also has a hole for the lock).

If you ordered the extra tray set, you'll need to fit 4 runners per side.

2

Then take one side panel (it doesn't matter which) and fix the back panel (the Lamello holes should be towards the inside).

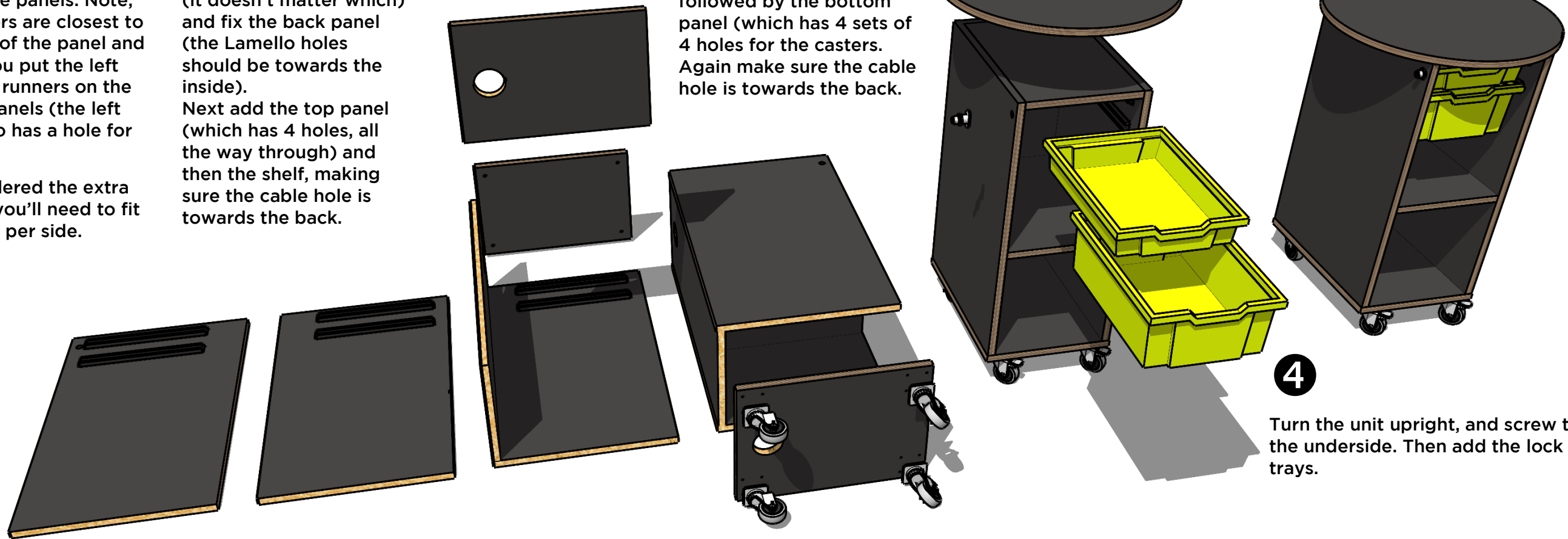
Next add the top panel (which has 4 holes, all the way through) and then the shelf, making sure the cable hole is towards the back.

3

Fit the other side panel followed by the bottom panel (which has 4 sets of 4 holes for the casters). Again make sure the cable hole is towards the back.

4

Turn the unit upright, and screw the top from the underside. Then add the lock and Gratnells trays.



learniture

ASSEMBLY INSTRUCTIONS

DASH



learniture

www.learniture.co.uk
+44 (0) 1491 352152

DSH-INS R1 09/20