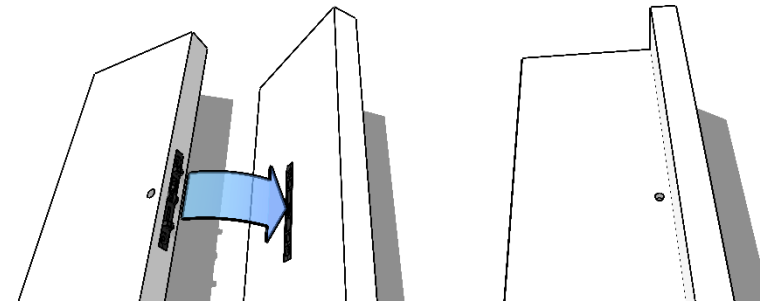




TO ASSEMBLE THIS,
YOU'LL NEED THE
FOLLOWING TOOLS:

4MM LONG ALLEN KEY
(THERE'LL BE ONE IN YOUR
TOOL BOX)

POZIDRIVE SCREWDRIVER

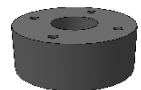


LAMELLO

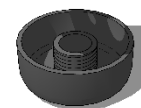
Unlike traditional cam fixings, the fixings we use are designed not to be seen when the unit is assembled. To fit them, simply align the pair of fixings, and use an allen key in the adjacent hole to join twist the lever from one into the other.

1

First, fit the feet to the underside of the base panel. There are two parts to the feet - separate them and screw the upper part to the panel and then screw in the adjustable lower part of the foot.



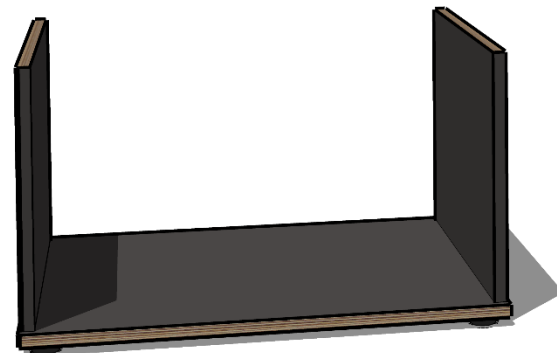
Upper part - screw this to the panel



Lower part - fit this to the upper part once you've screwed it to the panel. The screw thread provides adjustment if your floor is uneven

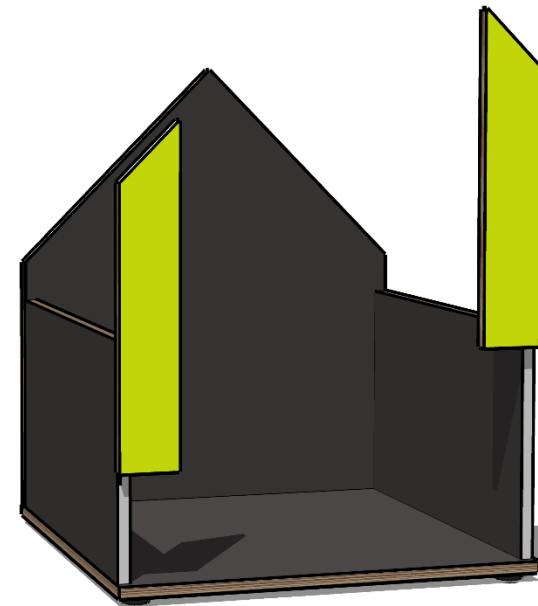
2

Turn the base over, and fit the two side panels. There are four Lamello fixings along the bottom of the panel - make sure the allen key holes are facing inwards. We've included a 'packer' that you might find useful to clamp to the back of the base to help you line everything up.



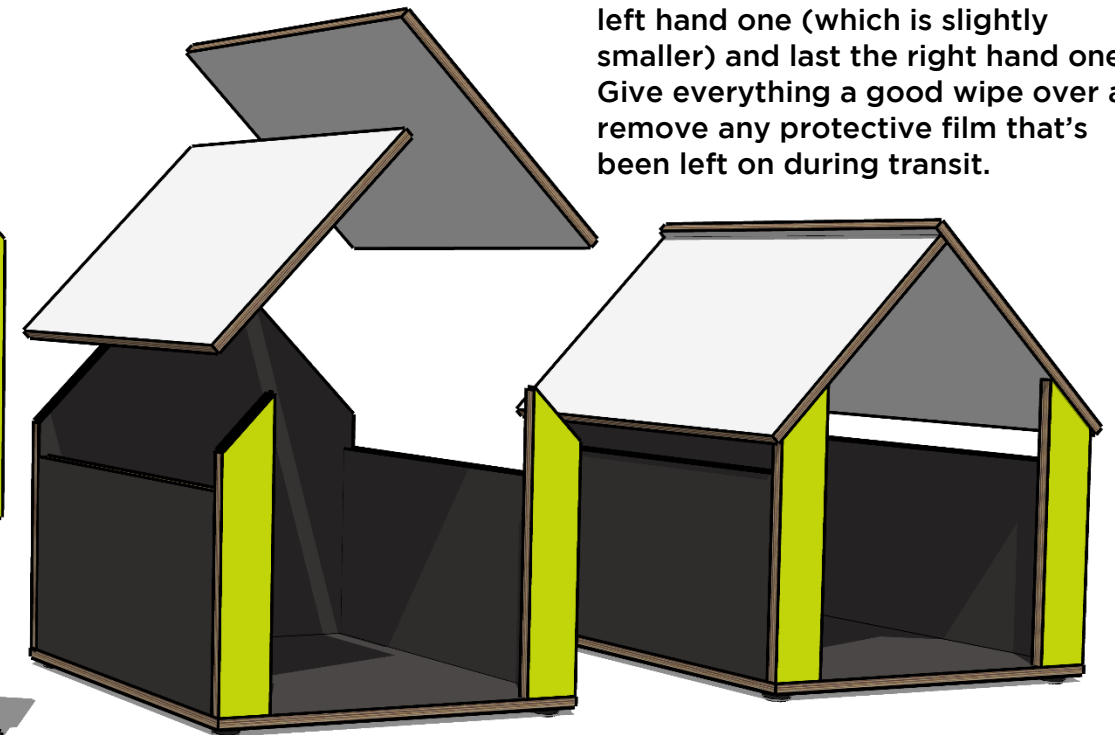
3

Then add the back panel, followed by the two front panels - again making sure the allen key holes are facing inwards.



4

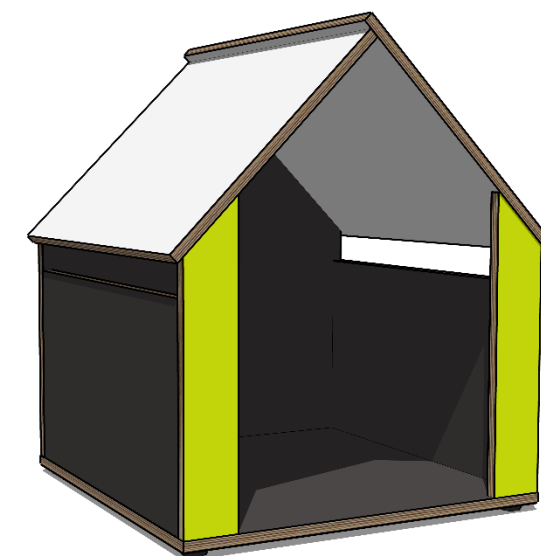
Finally add the roof panels - first the left hand one (which is slightly smaller) and last the right hand one. Give everything a good wipe over and remove any protective film that's been left on during transit.



learniture

ASSEMBLY INSTRUCTIONS

LITTLE RETREAT



learniture

www.learniture.co.uk
+44 (0) 1491 352152

LTR-INS R109/20